

## Importing ICC Profiles into a RIP

### Introduction

The process of importing Avery Dennison ICC profiles may vary and include different steps depending on the specific RIP software in use. This bulletin covers a step by step guide for Onyx, Caldera and Versaworks.

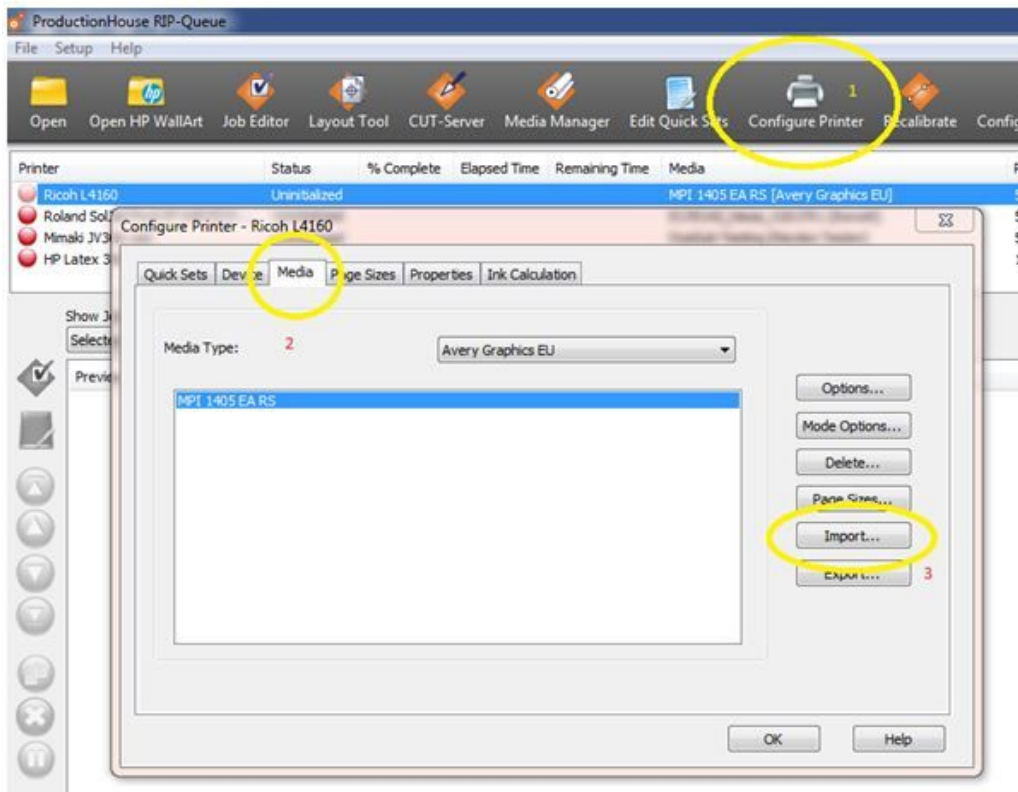
Before following the steps below, download the requested ICC profile from the Avery Dennison Graphics Profile Download Client under <https://averydennison-eu.color-base.com/index.php>.

### Onyx

There are few different ways to import media profiles into ONYX. You can import profiles in Media Manager, through RIP-Queue's Manage/Configure Printer interface. Media profiles are saved as either part of a PmInst file or on their own as an .OML file, both of which can be used to import a profile.

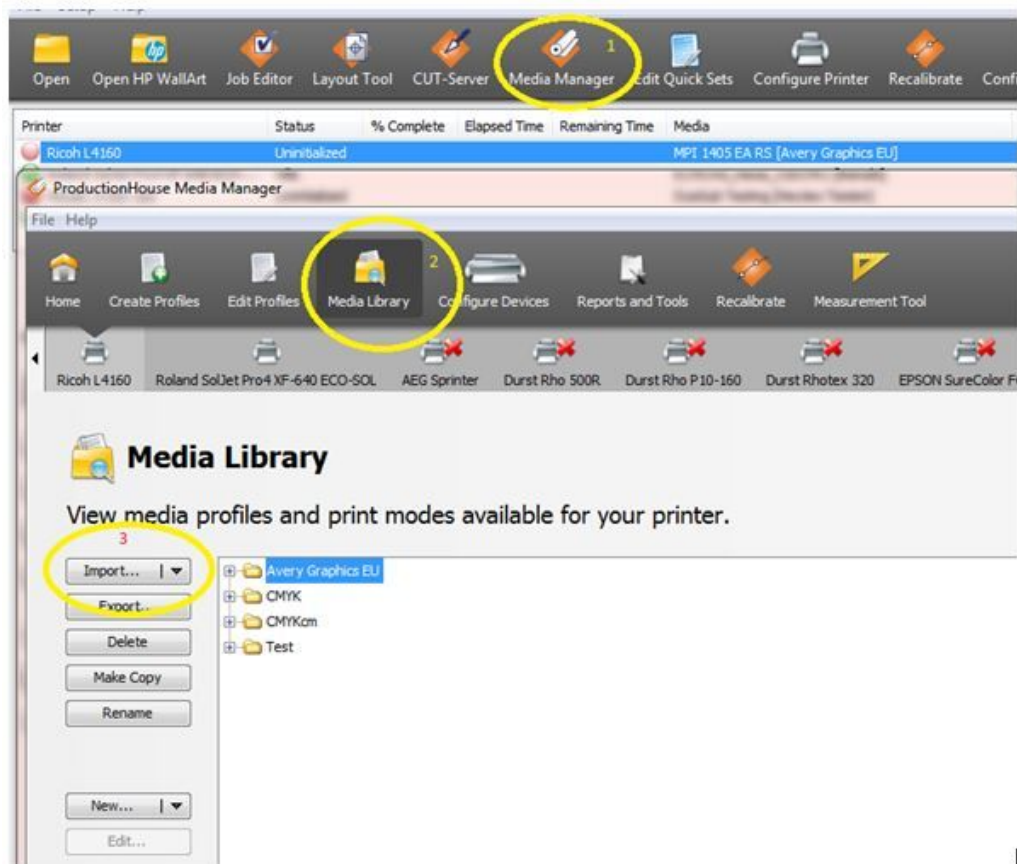
### Importing a profile in RIP-Queue

1. Open RIP-Queue.
2. Select the printer and click on 'Configure Printer'. Browse to the 'Media' tab.
3. Click 'Import'.
4. Browse to the .OML or .PmInst file you are importing from.



### Importing a profile in Media Manager

1. Open Media Manager.
2. Click on 'Media Library', then 'Import'.
3. Browse to the .OML or .PrnInst file you are importing from.



### After Importing

1. **Nozzle Check.** Perform a nozzle check to see if the printer is having all the nozzles
2. **Feed Compensation.** It's important that you perform a Feed Compensation on the printer and if needed a Head Alignment (depends on the type of printer).
3. **Heater settings.** The temperatures are set in the profile, if you need different settings you can edit this on the printer or in the profile, it's not recommended but maybe necessary in some occasions like big differences in humidity, temperature etc.

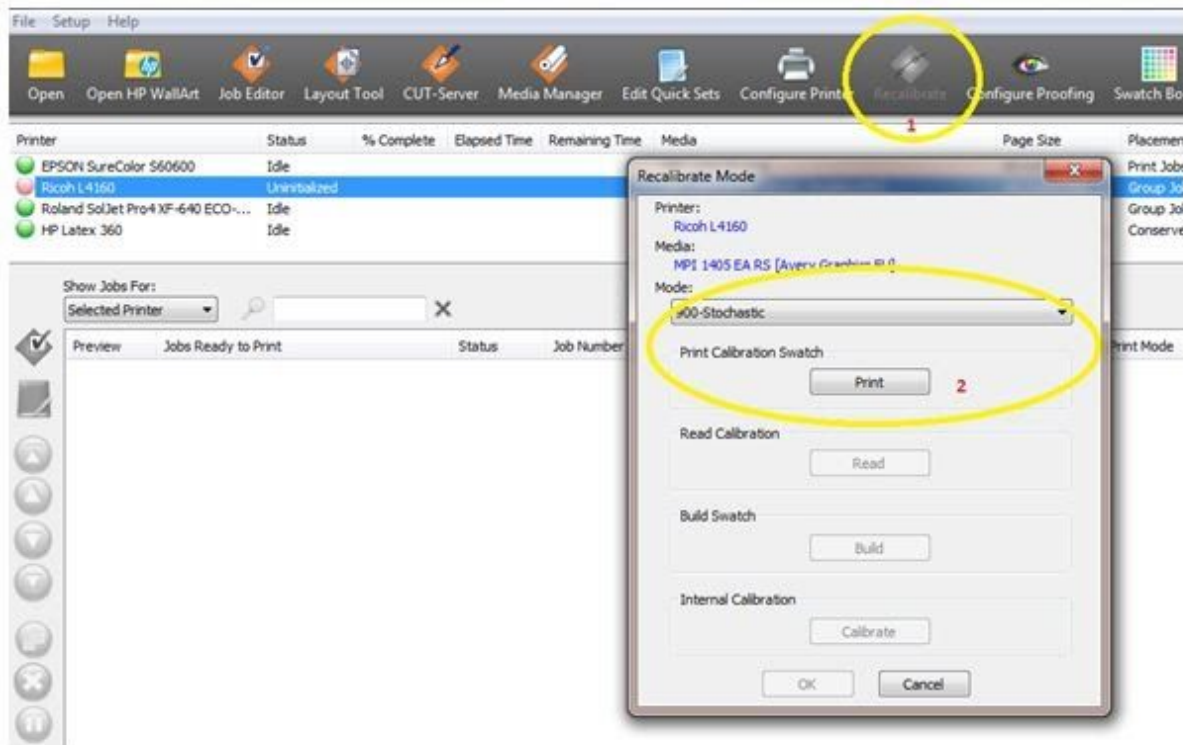
### Recalibration

The behavior of the printer can change over a period of time. A change in environmental conditions, such as increased air humidity, or replaced ink cartridges can easily affect the printer's color reproduction. You can compensate for this and ensure you get consistent color output from your printer by re-linearize your printer. Most software does have the tools to do this. You will need a color measuring device (spectrophotometer) to do this or use the internal measurement device from the printer (e.g. in the HP Latex 360).

## Technical Bulletin 5.13

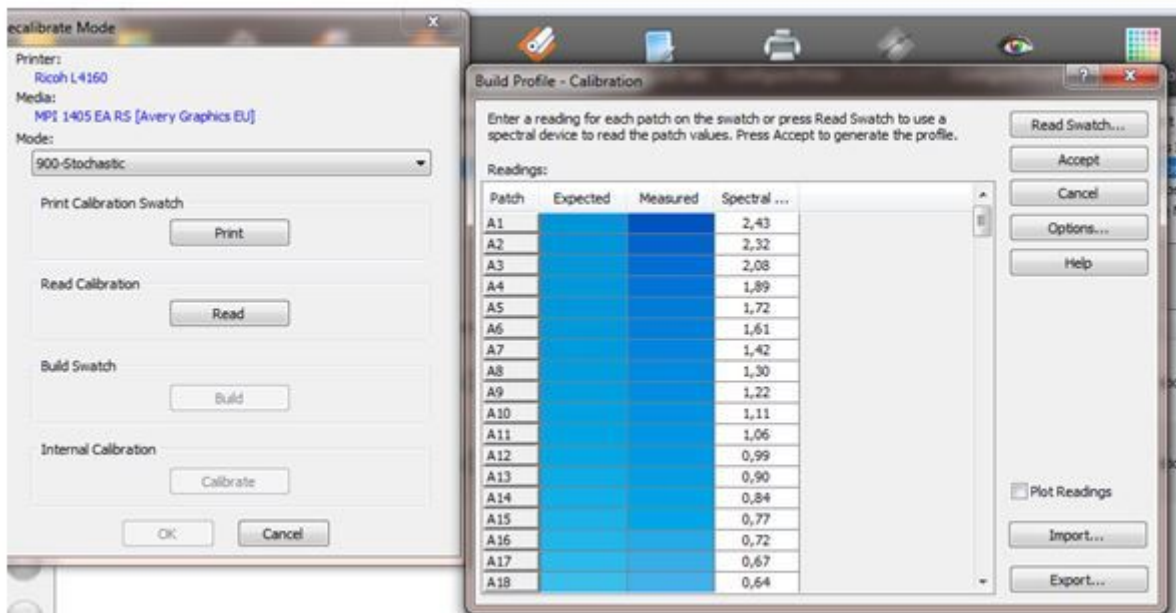
In ONYX you can find the option 'Recalibrate' in the Rip Queue, it's a step by step process and will automatically update/adjust your profile with the newest readings.

1. Select the Printer and Select the media you want to re-calibrate
2. Go to Recalibrate in the menu (1)
3. Select the print mode (resolution)



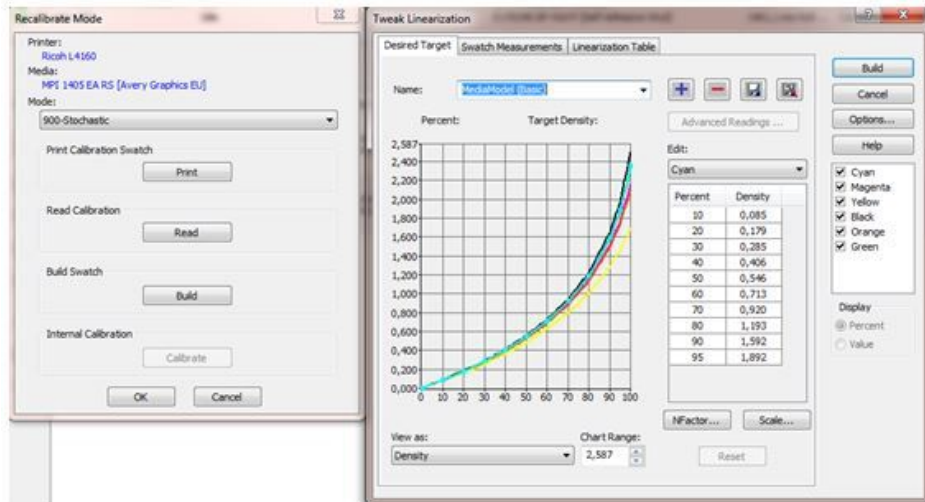
(You need a Spectrophotometer to perform the calibration)

4. Print and Measure the chart



## Technical Bulletin 5.13

- Click Build, it will show you the calibration, when there are no problems visible (e.g flat curves, strange peaks) you can click OK and the calibration is finished.



## Caldera

### Importing a profile

For importing ICC profiles in Caldera the Easymedia tool can be used.

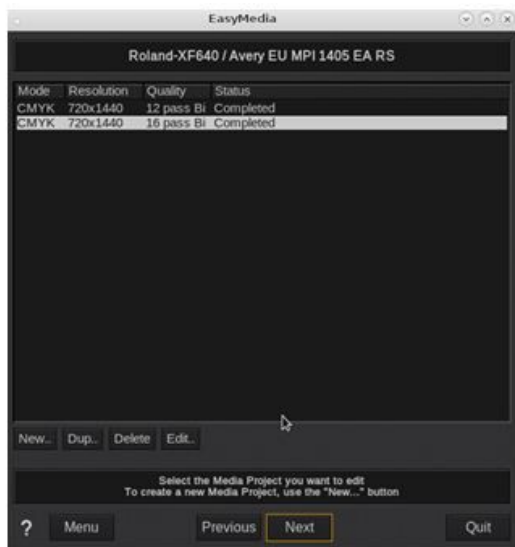
- Open Caldera RIP
- Select Easy Media



- Select the printer you are using



4. Click Next
5. Click Import at the right bottom and select Install Patch
6. Browse to the .calpatch file and import the profile
7. If Caldera is asking for a password, the default password is caldera
8. You can now see the profile in the overview, this specific profile contains 2 modes you can use



### After Importing

1. **Nozzle Check.** Perform a nozzle check to see if the printer is having all the nozzles
2. **Feed Compensation.** It's important that you perform a Feed Compensation on the printer and if needed a Head Alignment (depends on the type of printer).
3. **Heater settings.** The temperatures are set in the profile, if you need different settings you can edit this on the printer or in the profile, it's not recommended but maybe necessary in some occasions like big differences in humidity, temperature etc.

### Recalibration

The behavior of the printer can change over a period of time. A change in environmental conditions, such as increased air humidity, or replaced ink cartridges can easily affect the printer's color reproduction. You can compensate for this and ensure you get consistent color output from your printer by re-linearize your printer. Most software does have the tools to do this. You will need a color measuring device (spectrophotometer) to do this or use the internal measurement device from the printer (e.g. the HP Latex 360).

In Caldera you can find the option 'Relinearize' in the Easy Media, it's a step by step process and will automatically update/adjust your profile with the newest readings.

## Technical Bulletin 5.13

1. Select the Printer and Select the media you want to re-calibrate
2. Click the mode you want to re-calibrate



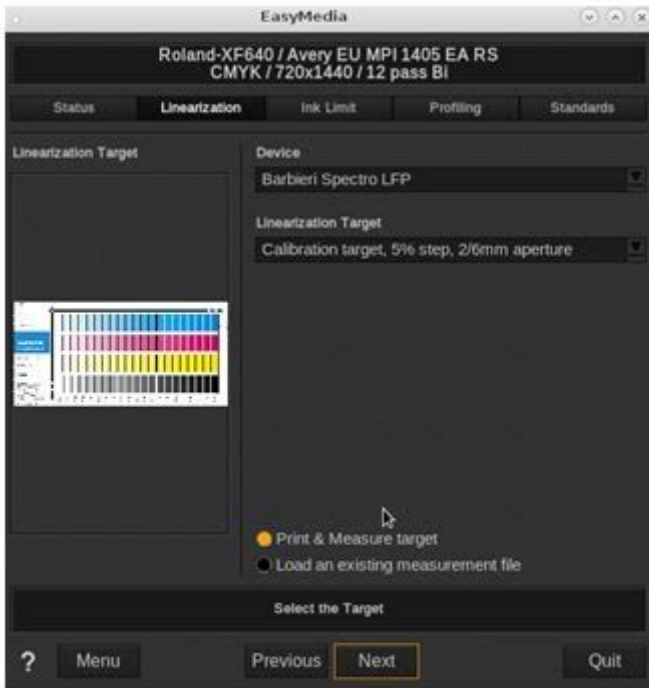
3. Click Next
4. Select the second option 'Relinearize' and stay in 'Run Wizard (Print/Measure/Build)' procedure



5. Click Next

## Technical Bulletin 5.13

6. Select the measurement device you want to use and the amount of patches you want to print

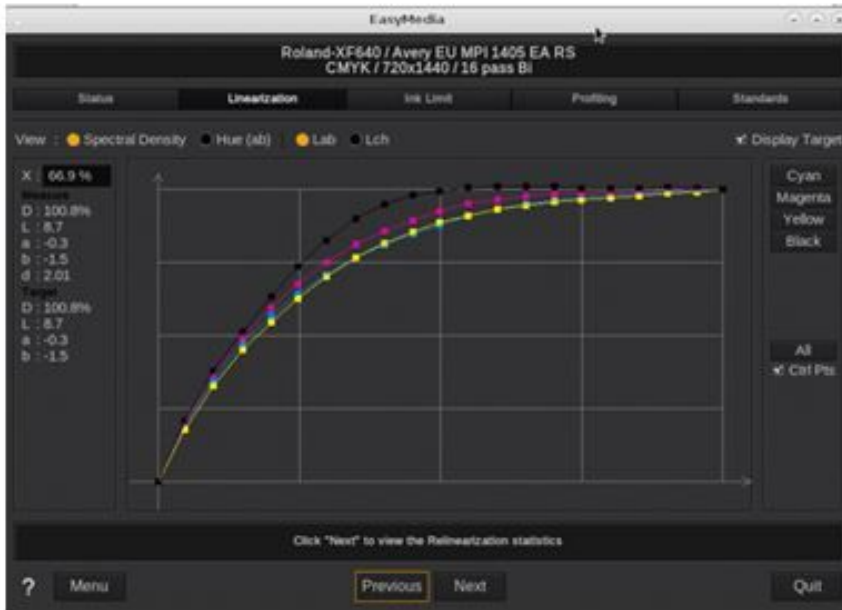


7. Select the roll width and print the target



(You need a Spectrophotometer to perform the calibration)

- Print and Measure the chart, this will generate curves



- Click Next
- You see the statistics of the measurements. In this example it's not necessary to linearize because there's no difference between first measurement and the new one. Finish the process by clicking Next and save the modifications after you click Quit

The screenshot shows the 'Relinearization Statistics' screen with the following data:

Current deviations	C	M	Y	K
Density shift	0.0	0.0	0.0	0.0
Average DeltaE	0.0	0.0	0.0	0.0
Max DeltaE	0.0	0.0	0.0	0.0
If you Relinearize	C	M	Y	K
Density shift	0.0	0.0	0.0	0.0
Average DeltaE	0.0	0.0	0.0	0.1
Max DeltaE	0.1	0.2	0.2	0.5
Average Curve Correction	0.0	0.0	0.0	0.0
Curve Correction	+0.1%	+0.3%	+0.4%	+0.9%

Reference device : Barbieri Spectro LFP [B105488], White Point: L=94.9 a=-0.8 b=-0.8  
 Current device : Barbieri Spectro LFP [B105488], White Point: L=94.9 a=-0.8 b=-0.8

**Relinearization is NOT RECOMMENDED**  
 Relinearization is not needed. You can proceed, but this probably will not have any effect.

Click the "Next" button to complete Relinearization

Buttons: Previous, Next (highlighted), Quit.

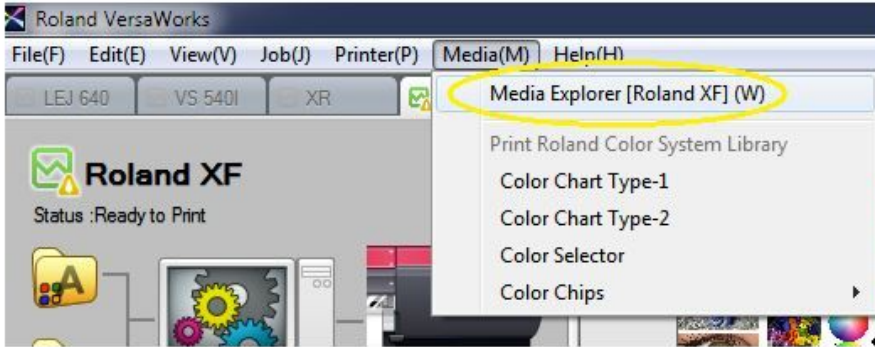


## Versaworks

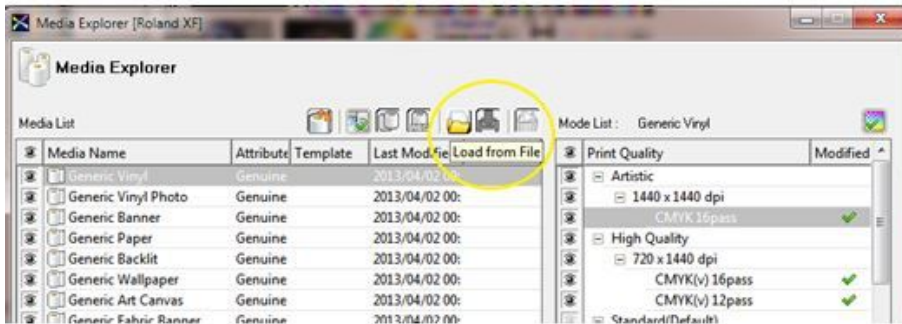
### Importing a profile

Profiles from Versaworks can be imported with the Media Explorer.

1. Open the Media Explorer in Roland Versaworks



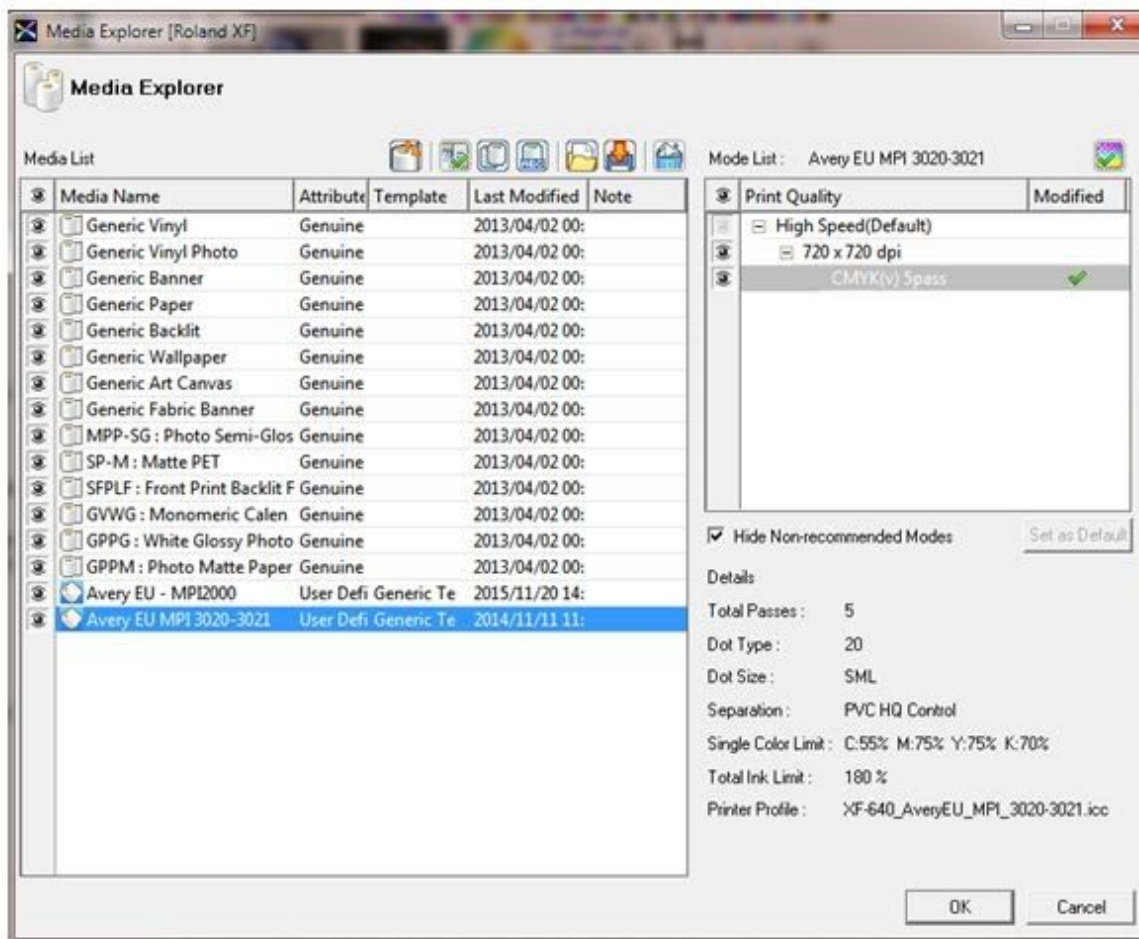
2. Select the button 'Load from File'



3. Browse to the .rml file and click 'Open'



Now the profile is visible in the list and we can start using it.



### After Importing

1. **Nozzle Check.** Perform a nozzle check to see if the printer is having all the nozzles
2. **Feed Compensation.** It's important that you perform a Feed Compensation on the printer and if needed a Head Alignment (depends on the type of printer)
3. **Heater settings.** The temperatures are set in the profile, if you need different settings you can edit this on the printer or in the profile, it's not recommended but maybe necessary in some occasions like big differences in humidity, temperature etc.

### Recalibration

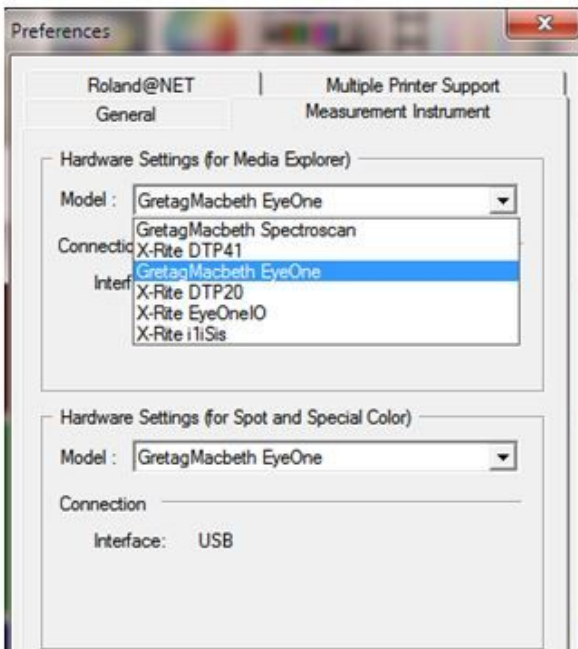
The behavior of the printer can change over a period of time. A change in environmental conditions, such as increased air humidity, or replaced ink cartridges can easily affect the printer's color reproduction. You can compensate for this and ensure you get consistent color output from your printer by re-linearize your printer. Most software does have the tools to do this. You will need a color measuring device (spectrophotometer) to do this or use the internal measurement device from the printer (e.g the HP Latex 360).

First of all we need to select the Measurement Device which you want to use for re-calibration.

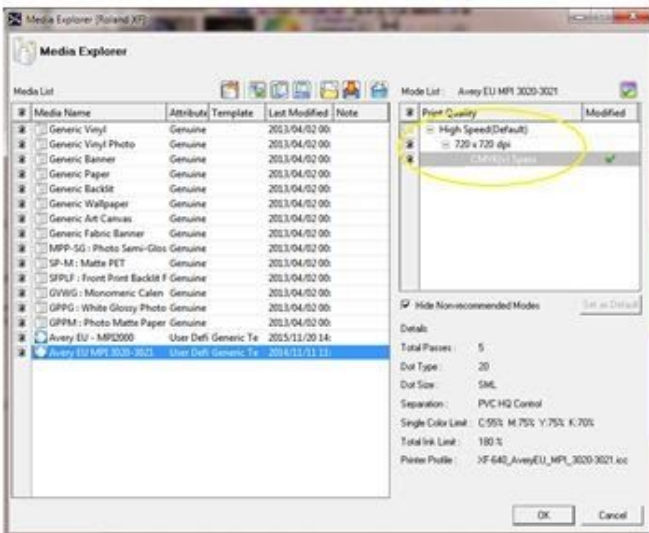
1. Go to menu Edit and Select Preferences



2. Select Measurement Instrument and the model you want to use



3. Click OK and go to the Media Explorer
4. Select the profile you want to re-calibrate and double click the resolution



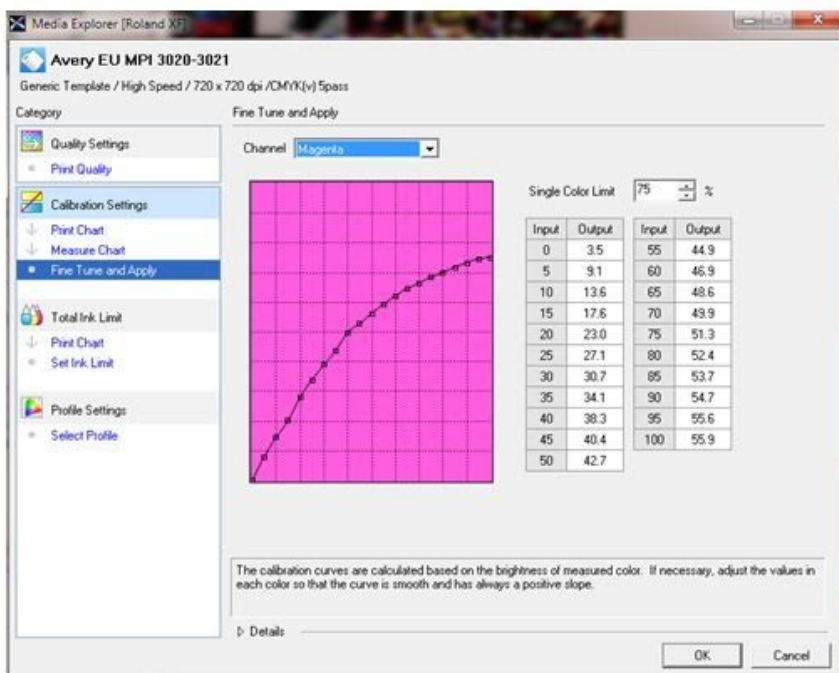
- Go to *Print Chart* and press *Print*



- After printing select *Measure Chart* in the Menu and click *Calibrate* to calibrate your device
- Now click *Measure* and measure the chart.



- After all rows are measured you can check the result when you click 'Fine Tune and Apply' in the menu.



- Check if the curves are smooth and are going up, if yes you can finish the process by clicking OK.

**DISCLAIMER** All Avery Dennison statements, technical information and recommendations are based on tests believed to be reliable but do not constitute a guarantee or warranty. All Avery Dennison products are sold with the understanding that purchaser has independently determined the suitability of such products for its purposes. All Avery Dennison's products are sold subject to Avery Dennison's general terms and conditions of sale, see <http://terms.europe.averydennison.com>

©2019 Avery Dennison Corporation. All rights reserved. Avery Dennison and all other Avery Dennison brands, this publication, its content, product names and codes are owned by Avery Dennison Corporation. All other brands and product names are trademarks of their respective owners. This publication must not be used, copied or reproduced in whole or in part for any purposes other than marketing by Avery Dennison.